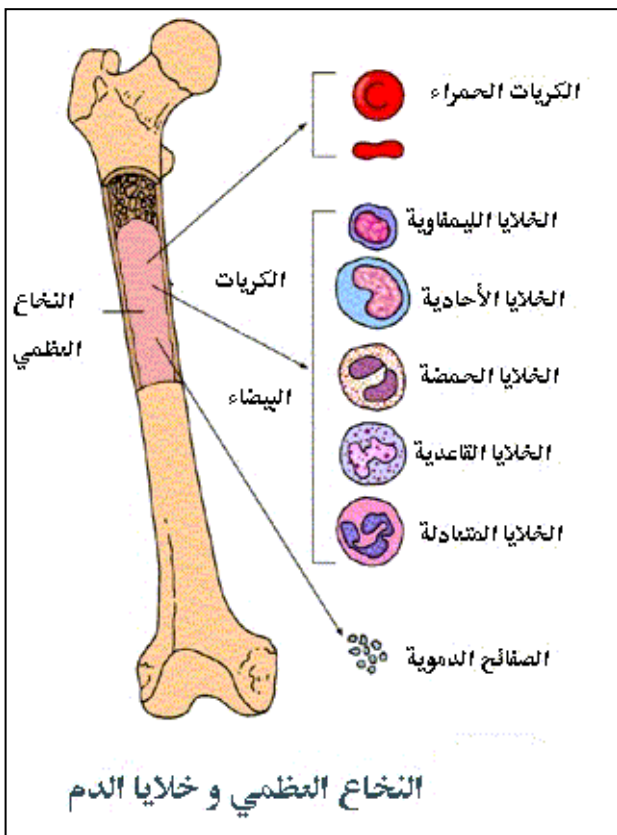


- -
 -
 -
 -
 -
 -
 -
 -
 -
 -
 -
-

(hematopoietic cells)
(Stem cells)

()



(bone marrow suppression)

(Red blood cells)

(Hemoglobin)

(White blood cells)

(platelets)

)

(

(nadir)

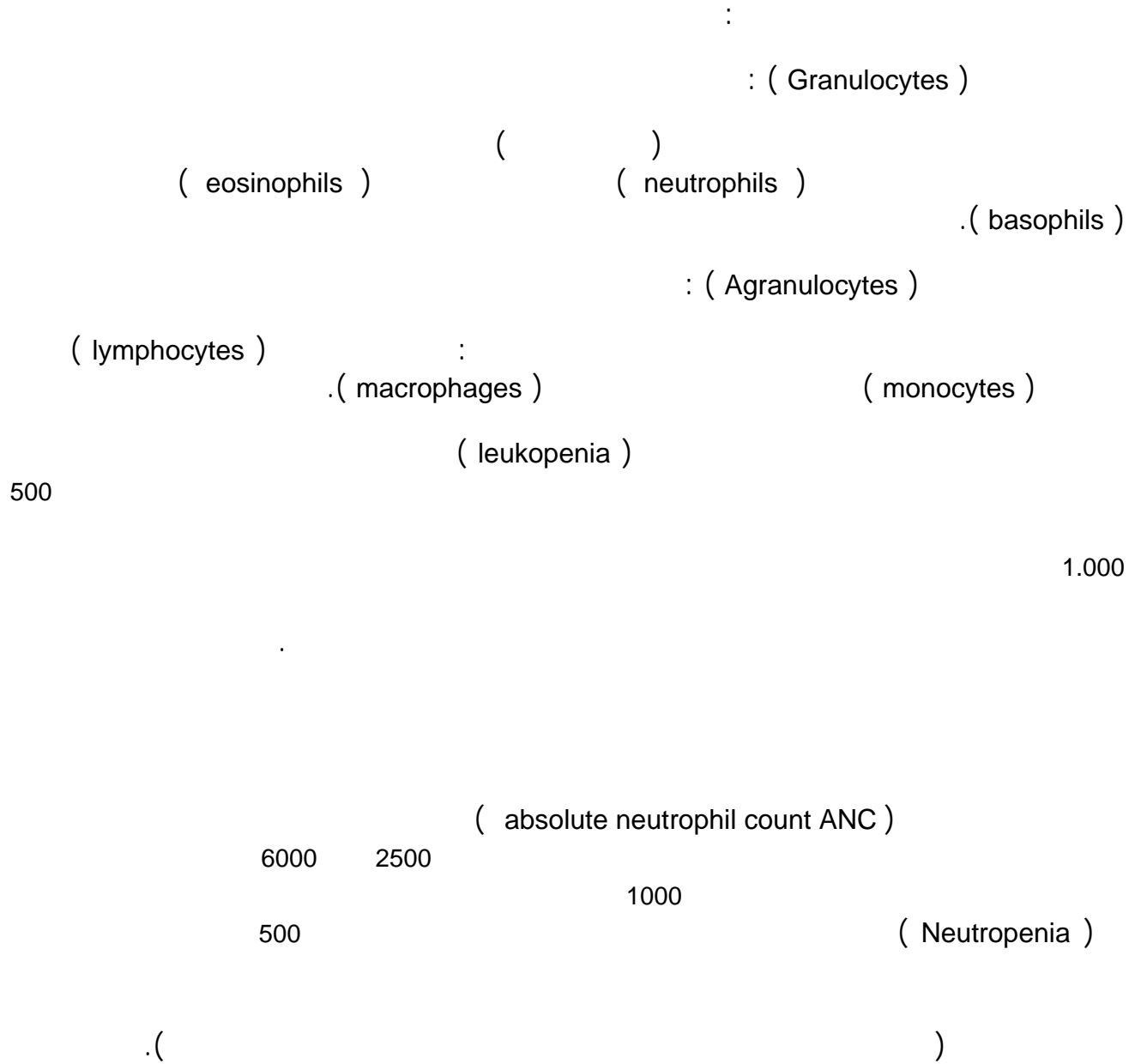
(complete blood count CBC)
)

(

(Anemia)
(Thrombocytopenia)

(leukopenia)





(hematopoietic growth factors)
(Colony-stimulating factors CSFs)

(stem cells)

:

(Granulocyte colony-stimulating factor G-CSF)
(Neupogen) (Filgrastim)

•

Granulocyte-macrophage colony-stimulating factor)
(Leukine) (sargramostim)

(GM-CSF

•

.()

:

()

()

:

Klebsiella) (Pseudomonas aeruginosa)

(Escherichia coli (E coli))

(Streptococcus) (Enterococcus)

Staphylococcus aureus,) ()

(pneumoniae)

(Clostridium difficile)

(Pneumococcus)

(epidermidis)

:

(herpes simplex virus)

(herpes)

(chickenpox)

(Cytomegalovirus)

:

(protozoa)

(Pneumocystis)

(Cryptosporidium)

.(Toxoplasma)

:

(Candida)

.(Histoplasma)

(Aspergillus)

(Cryptococcus)

:

-
-
-
-
-
-
-
-
-
-
-

:

-
-
-
-
-

:

-
-
-
-
-
-
-
-

•

•

•

•

•

•

•

•

•

○

○

○

○

○

•

•

•

•

•
•

.()



()

13.5 11.5

10

.()

:

-
-
-
-
-
-
-

(Erythropoietin)

(Procrit)

(epoetin alfa)

-
-

-
-
-
-
-

(Thrombocytopenia)

400.000 150.000

(Thrombocytopenia)

3

10.000

(megakaryocyte)

50.000

:

3

10.000

3

•

•

•

•

•

•

:

•

•

•

•

•

•

.(

)

•

•

•

•

•

(

)

•

•

•

•

•

•

•

•

:

•

•

•

•

•

()

20.000

(Neumega)

(Oprelvkin)

2010-06-12 :

منشورات جمعية آدم لسرطان الطفولة

<http://www.adamcs.org>